

WHEELER *Home*

1921 PIONEER ST



4 BED



3.5 BATH



2834 SF



\$885,000

With a wraparound porch, enclosed patio, and a balcony, this home will be enjoyed outdoors as much as it is indoors. The first floor features the living room, large kitchen, and dining room. On the second floor, you can find the primary suite with a sizable en suite with balcony access along with a pocket office, three secondary bedrooms, one with an en suite, and a hall bathroom. Live comfortably and efficiently with top-of-the-line features like Pella windows, geothermal heating and cooling, and solar power in the heart of Wheeler District.

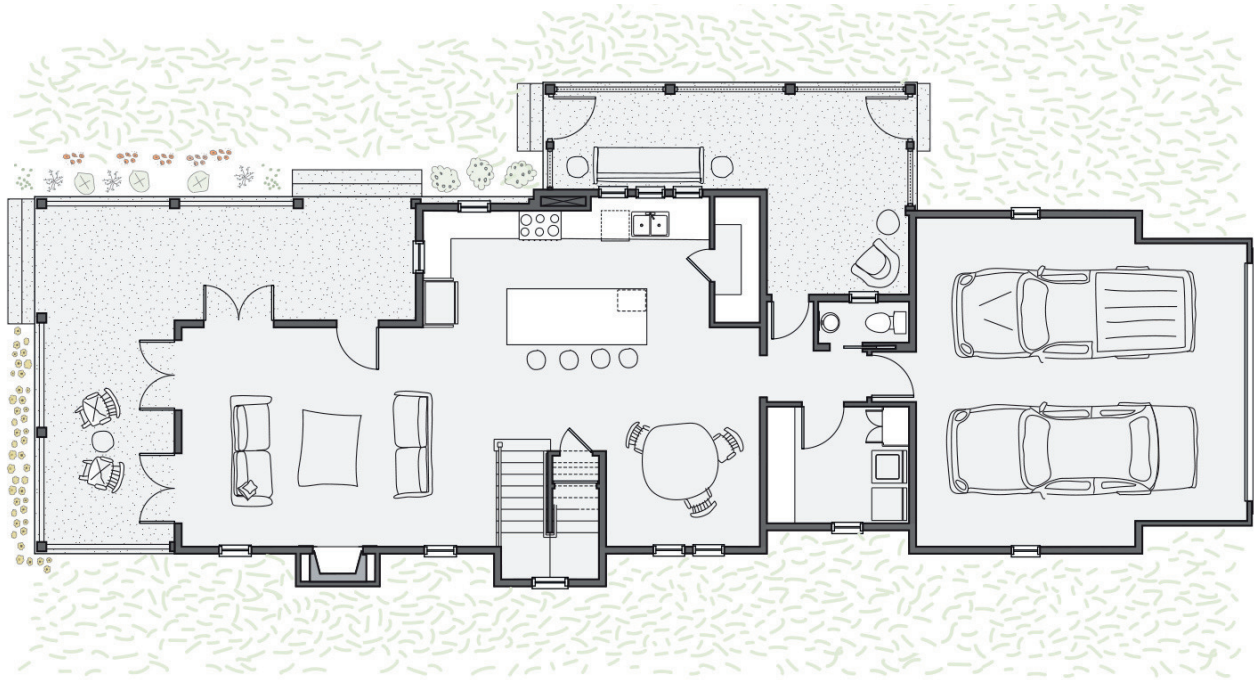


All marketing materials are provided for informational and inspiration purposes only. Prices and fees subject to change.

1921 PIONEER ST

			
4 BED	3.5 BATH	2834 SF	\$885,000

First floor:



Second floor:

