

WHEELER *Home*

1911 OSO AVE



3 BED



2.5 BATH



1556 SF



\$495,000

Offering all the efficiencies of a traditional Wheeler cottage, this plan features a few additional favorite amenities, such as a wrap-around front porch that faces the courtyard and an attached garage. Floor one hosts the living space, kitchen, powder bath, and study. The second floor presents the primary suite, two secondary bedrooms, and a full bath. Exclusive to this home location, this cottage provides front porch views of the community park and is a skip away from the playground and pool.



All marketing materials are provided for informational and inspiration purposes only. Prices and fees subject to change.

1911 OSO AVE



3 BED



2.5 BATH

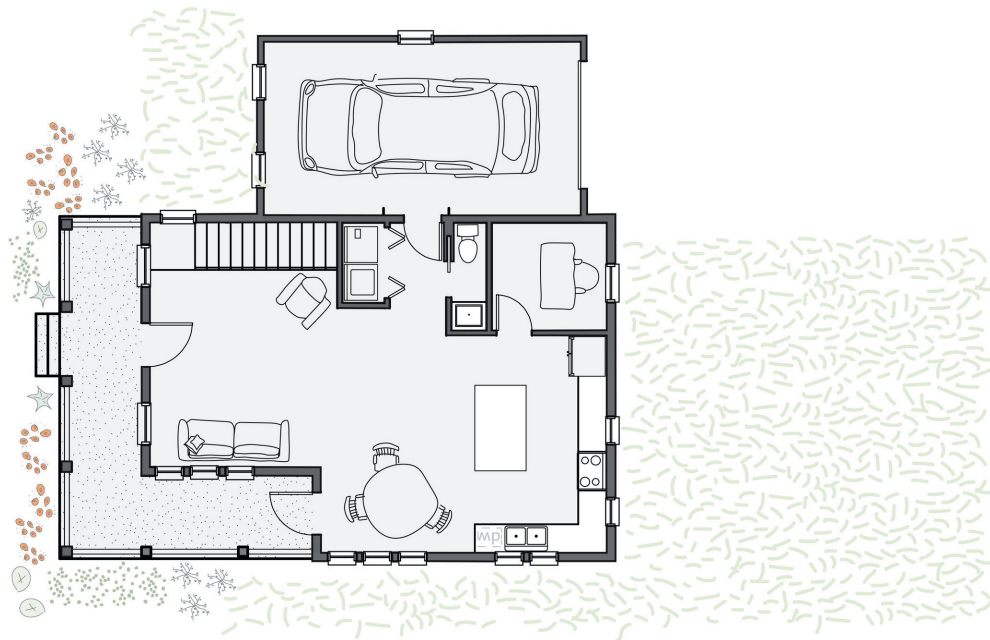


1556 SF



\$495,000

First floor:



Second floor:

