

# WHEELER *Home*

1004 Pedalers Ln



2 BED



1.5 BATH



789 SF



\$275,000

This unique Wheeler cottage home offers simplistic, compact living with a minimalist feel. Enjoy coffee on your front porch while visiting with your neighbors on Pedaler's Lane. This cottage home has a full kitchen and dining space on the first floor, one bedroom, and a full bathroom. The second floor provides a loft-style living space, a second bedroom, and a half bath. This home features private covered parking just seconds away from your front door. Wheeler District boasts scenic streetscapes with abundant trees, pedestrian-friendly pathways, and neighbors who value community. With new amenities like parks, local shops, and community events, Wheeler District is the place to be!



All marketing materials are provided for informational and inspiration purposes only. Prices and fees subject to change.

1004 Pedalers Ln



2 BED



1.5 BATH

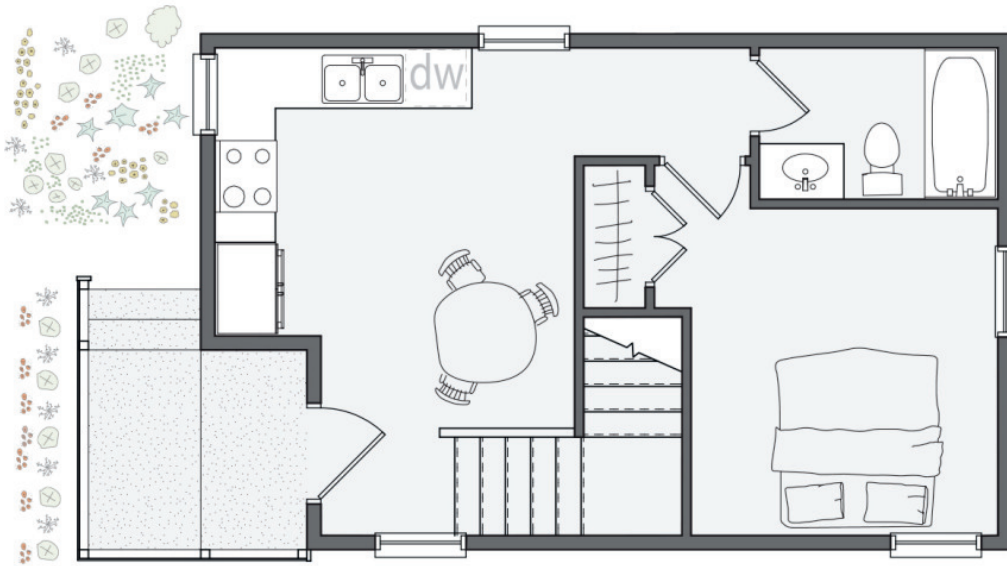


789 SF



\$275,000

First floor:



Second floor:

