

WHEELER *Home*

922 HANGAR DR



3 BED



2.5 BATH



1738 SF



\$575,000

This home combines both daily comfort and community living! The main floor features an open-concept living room with a fireplace, dining space, and kitchen with plenty of natural light. It also includes a functional mudroom, utility room, and powder bath. Upstairs includes a primary suite, en suite bath, walk-in closet, two secondary bedrooms and full hall bath. Outside, a covered porch offers a perfect spot for relaxation, while the shared courtyard space enhances the sense of community. With direct access to a two-car garage and nearby amenities, this home is contemporary living at its best.



All marketing materials are provided for informational and inspiration purposes only. Prices and fees subject to change.

922 HANGAR DR



3 BED



2.5 BATH

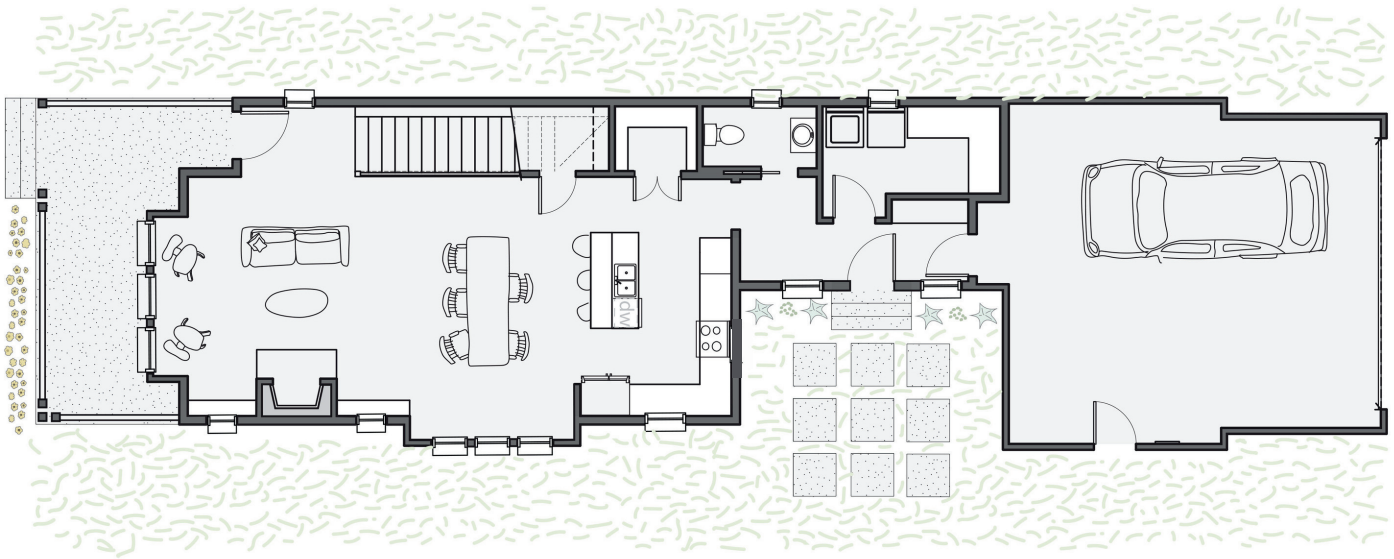


1738 SF



\$575,000

First floor:



Second floor:

