

WHEELER *Home*

1054 HANGAR DR



2 BED



1.5 BATH



906 SF



\$2400/m

The Yankee Lady combines the space-saving features of a classic Wheeler home with the advantages of a convenient open floorplan. This home is anchored by the main living space that includes wood floors, a kitchen with an expansive island, along with a mudroom and powder bathroom. Just up the staircase, two full bedrooms complete this cozy abode, one having private access to a shared bathroom. The house also has private covered parking just a few steps from the front door, ensuring easy access to your vehicle. Expect lower utility bills with top-of-the-line features including Pella windows, and geothermal heating and cooling.



All marketing materials are provided for informational and inspiration purposes only. Prices and fees subject to change.

1054 HANGAR DR



2 BED



1.5 BATH

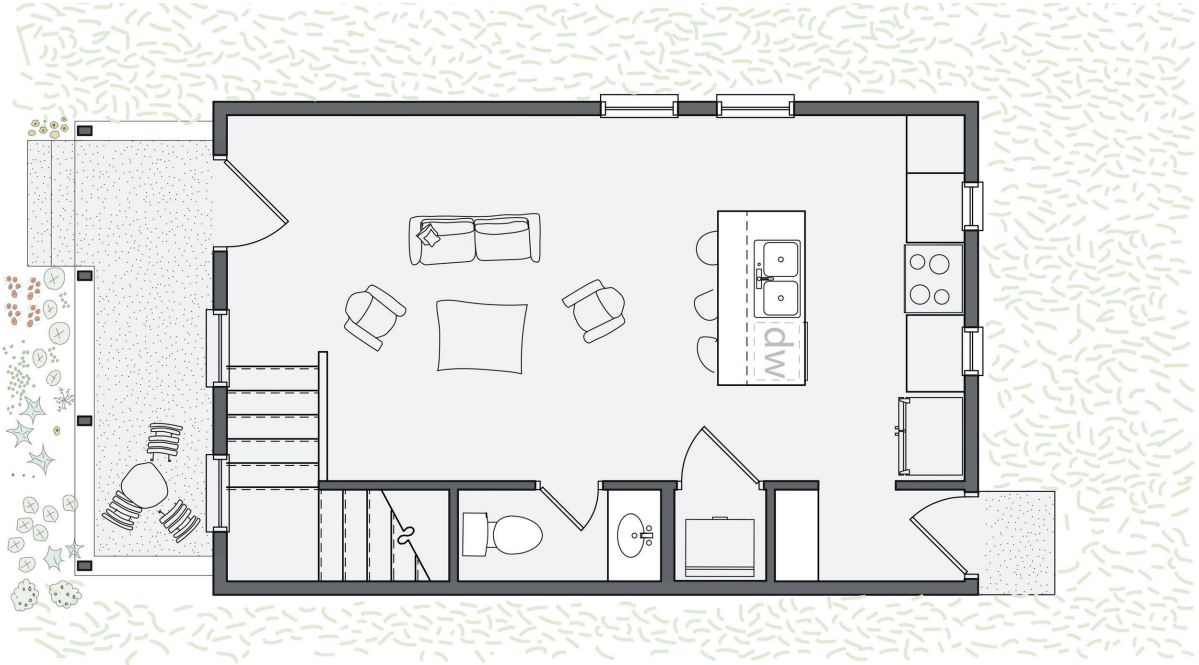


906 SF



\$2400/m

First floor:



Second floor:

