

# WHEELER *Home*

**920 PEDALERS LN**



3 BED



2.5 BATH



1347 SF



\$2700/m

Combining the amenities of a classic Wheeler home with the efficiencies and charm of the original Wheeler cottages, this home has been crafted with intentional outdoor living spaces, energy-efficient geothermal heating and air, and amplified square footage. The ground floor features a kitchen with extra storage space, a walk-in pantry, and direct access to the back courtyard. The second floor hosts two secondary bedrooms and a bathroom. On the third level, a full-floor primary suite, including double vanity sinks and a large walk-in closet.



All marketing materials are provided for informational and inspiration purposes only. Prices and fees subject to change.

# 920 PEDALERS LN



3 BED



2.5 BATH



1347 SF

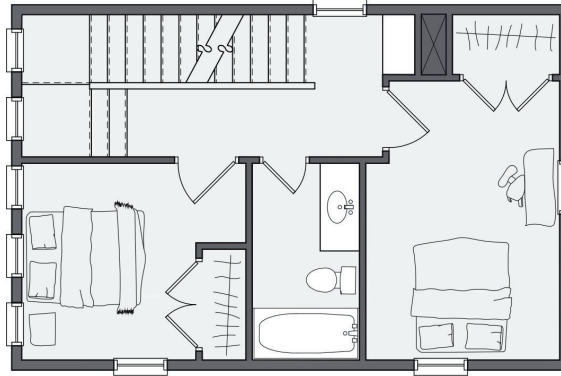


\$2700/m

First floor:



Second floor:



Third floor:

